

St. John Fisher Junior & Senior Elementary
Special Governing Board Minutes 03/10/2021
6:30 p.m. – 7:30 p.m.
Zoom Meeting (COVID 19)

Type of Meeting: Governing Board – Special 2020-2021 #2

St. John Fisher Junior Parent Members: Nadia Lawand, Angela Kovalak, Phil Lambert, Christina Cory, Naomi Proctor

St. John Fisher Senior Parent Members: Sarah Campeau, Christina Forest, Nadia Lawand, Mark Sankoff, Marie-Claire Caillard

St. John Fisher Junior Parent Substitutes: Christine Archambault, Allison Gerhart, Matthew Knox

St. John Fisher Senior Parent Substitutes: Andrea Borrelli, Tiffani Wheeler, Carla DaSilva

St. John Fisher Junior Staff: Nadine Émond, Sandi Hammock (Daycare), Michèle Larin, Martine Létourneau, Tania Nouvet

St. John Fisher Senior Staff: Linda Neron, Marie-Hélène Mondor, Laura Sulano, Aida Lukosevicius, Rachel Ethier

SNAC Representative: Evelyn Hornblower

St. John Fisher Senior Community Representative: Tom Fullerton, Daphne Daifas

Ex-Officio: Deborah Shizgal, Natasha Mentore

Invited: Noel Burke, Tom Rhymes, David Meloche, Judith Kelley, Carol Heffernan (left at 7:39pm)

SP2.1 AGENDA TOPICS

SP2.1.1 TERRITORIAL ACKNOWLEDGEMENT

Nadia Lawand read the Territorial Acknowledgement

SP2.1.2 CALL TO ORDER AND WELCOME

Meeting called to order at 6:33pm. Nadia Lawand welcomed everyone and thanked them for attending the Special Governing Board meeting.

SP2.1.3 ADOPTION OF THE AGENDA

A motion to adopt the agenda was duly proposed by Sarah Campeau, seconded by Nadine Émond and approved unanimously. **Resolution: 20-21-03**

SP2.1.4 ADOPTION OF THE MINUTES OF SPECIAL MEETING ON FEBRUARY 10, 2021

A motion to adopt the minutes was duly proposed by Martine Létourneau, seconded by Christina Cory and approved unanimously. **Resolution: 20-21-04**

SP2.2 BUSINESS ARISING

SP2.2.1 SCHOOL START/END TIME PROPOSAL

Deborah Shizgal welcomed everyone and explained that this meeting is to discuss St. John Fisher Junior and Senior becoming late start schools. She introduced the members of the LBPSB that were present: Noel Burke, Tom Rhymes, Carol Heffernan, David Meloche and Judith Kelley. Deborah Shizgal turned the meeting over to the LBPSB.

Noel Burke thanked everyone for attending this special meeting. The objective, as viewed by

the Council, is to review the proposal and an alternative that might be considered by Council at it's March 2021 meeting. The proposal drew a lot of criticism over the change in start times for both the Junior and Senior campuses. Noel Burke continued by announcing that Council asked the administration to review the proposal to see if there were any other options for the schools. There are several issues to take into consideration.

1. Transportation issue
2. The influx of over 1000 students to the area
3. Safe access to all three school's properties
4. The collective agreements for the teachers requires them to teach for a certain number of hours per day and week
5. The significant increase of traffic in the neighbourhood

Noel Burke introduced the other speakers: Carol Heffernan, who will discuss the transportation network, David Meloche, the Regional Director, who will talk about the safe access to the schools and the buildings, Tom Rhymes who will talk about the two scenarios that are available. Two scenarios will be discussed this evening and the Governing Boards will have to give Council feedback by March 19, 2021 as to which option they would choose. Noel Burke emphasised two things: First, both options have a number of implications that we are all aware of, but he wants to inform everyone of the tremendous amount of work that was put into searching for an alternative option. Second, there was a lot of commentary that this decision has already been made, and that is not the case. There are many steps to follow before it is a done deal. The proposal needs to go through transportation, long term planning and then to the Council meeting being held on March 22, 2021.

Noel Burke introduced Carol Heffernan who then turned it over to Tom Rhymes.

Tom Rhymes thanked everyone for coming to the Governing Board meeting and thanked everyone for their continued commitment to Lester B. Pearson and to public education. Tom Rhymes wanted to make sure that everyone had a clear picture of how the landscape will change in the next year. With the Major School Change and the moving of St. Thomas High School from their Ambassador location to the Broadview location, there will be a significant influx of students, buses and traffic in and around the area of St. John Fisher Junior, Senior and Lindsay Place High School (St. Thomas).

Tom Rhymes presented a PowerPoint presentation entitled SJF Junior/Senior Planning for 2021-2022. Points covered during this presentation include: student increase from 400 students to 1350 students, bus increase from 6 regular and 3 mini to 22, drop off and pick up areas, STM frequency. Given the increase in the amount of buses, the capacity for drop off and pick up will need to be significantly modified. The logistics are still being worked out in regards to accommodating the 22 buses expected at the Broadview location. Currently at St. John Fisher Junior and Senior Campuses we have approximately 570 students and are projecting around 540 for next year.

Tom Rhymes turns the presentation over to Carol Heffernan.

Carol Heffernan began by describing the transportation network for the LBPSB. Currently there are approximately 230 bus routes that all have to be twinned, which means that one bus must do at least two runs. The way we are financed by the Ministry of Education is not just for one run, they want to ensure that the bus does at least two runs. One bus costs \$70,000.00 so by getting two runs out of a bus it drops it to \$35,000.00 a year from the Ministry of Education. We are financed on a five-year envelope so we receive the money and even if we have an influx of 1000 students in a year there would be no additional funding for transportation until the five years was up, therefore it is imperative that we live within our means. It can be a struggle every year within the transportation department as they try to twin routes throughout the system.

Currently St. John Fisher Junior/Senior have six twinned buses, three being twinned with Lindsay Place High School, one with Dorval, one with John Rennie and one with Horizon High School. St. Thomas High School has 18 twinned buses. Their day begins at 7:55am, however buses drop off students at 7:20am because those buses then need to go off the island of Montreal where they pick up students in L'Île Perrot and Pincourt and bring them back to Beaconsfield High School, Dorset Elementary, MacDonald High School and Christmas Park. Lindsay Place High School has nine twinned buses, six large and three minivans. Most of these busses are twinned with St. John Fisher and after doing the SJF route they go to Dollard as a general rule. There are many students in the Dollard area who attend LPHS and St. Thomas and they are looking to continue this as the LPHS students that are in Dollard will become St. Thomas students.

Carol Heffernan turns the presentation over to David Meloche.

David Meloche: In February, I was mandated by the Commissioners to present a PowerPoint to both Governing Boards. The presentation was entitled STT/LPHS Transition 2021-2022. This presentation discussed the Transportation Advisory Committee (TAC) Scenario A recommendation from their January meeting for start hours for St. John Fisher Junior and Senior for the 2021-2022 school year.

Scenario A: the proposed timetable for SJFJ would be 7:00am daycare opens, 9:15am school starts, 11:15am recess, 12:35pm lunch, 2:25pm recess, 3:45pm end of school and daycare opens, 6:00pm daycare closes. The proposed timetable for SJFS would be 7:00am daycare opens, 9:05am school starts, 11:05am recess, 12:25pm lunch, 2:15pm recess, 3:35pm end of school and daycare opens, 6:00pm daycare closes. The times in between the school start and the school end can be changed for example: the time of morning or afternoon recess can move. However, the schools need to make sure that they are still implementing two twenty minute recesses and a fifty-minute lunch as mandated by the Ministry are maintained and has to be agreed to by the teachers.

Scenario B: the proposed timetable for SJFJ would be 7:00am daycare opens, 8:50am school starts, 10:50am recess, 12:10pm lunch, 2:20pm recess, 3:40pm end of school and daycare opens, 6:00pm daycare closes. The proposed timetable for SJFS would be 7:00am daycare

opens, 8:40am school starts, 10:40am recess, 12:00pm lunch, 2:10pm recess, 3:30pm end of school and daycare opens, 6:00pm daycare closes. Some of the buses that leave St. Thomas High School will go to St. John Fisher Senior after dropping off the high school students, therefore the end time for the Senior/Junior schools could not change too much because the buses would not be able to arrive any earlier. Consequently, for this scenario there is an additional twenty minutes to the lunch hour. This scenario does still respect the collective agreement for teachers and it respects the thirty-two hours that they are on site and the 1500 minutes per week for student learning and it has to occur between 8:00am and 5:00pm. With the twenty-minute addition to the lunch hour, that would also entail additional costs. By increasing twenty minutes at lunch those salaries need to be paid, which would entail a \$1.00 increase for lunch fees to parents who only do the lunch program. There would not be any changes to regular daycare users fees. **APPENDIX ONE**

At this point St. John Fisher Senior Governing Board Chairperson, Christina Forest takes over chairing the meeting. The first set of questions will be taken from members of the Junior and Senior Governing Boards and teachers on the Governing Board.

Christina Cory: Can you explain the reasoning behind the increase of twenty minutes to the lunch hour?

David Meloche's response: The twenty-minute increase to the lunch hour is because the end time did not change significantly. St. Thomas buses will depart at 2:35pm and they need to do their full route and then come back to St. John Fisher for pick up. It is estimated this will take about an hour therefore the end time for St. John Fisher could not change significantly.

Phil Lambert: Thanked all LBPSB members for attending the meeting. His question was the same as Christina Cory's and therefore already answered.

Nadine Émond (translated): Mr. Meloche is this truly the earliest we can start? We are being forced to choose between two bad choices. Neither one is good for the children.

David Meloche's response (translated): We cannot move the end of the daytime, but we can move the start time, but that impacts placing those minutes somewhere else within the timetable and the only spot we have would be to add to the lunch hour.

Sarah Campeau: The Governing Board members were wondering about the results of the survey that must have been taken of the traffic in the area in order for you to have this type of assessment. For example, how many cars are coming through, what do you foresee for drop off zones, how are the children going to be getting on and off the buses.

Carol Heffernan's response: One of the objectives is to have St. Thomas buses drop off students between 7:20am and 7:30am and school will begin at 7:55am, therefore this will not infringe on the students being dropped off at St. John Fisher at 8:40am. Carol Heffernan commented that one of the biggest concerns for the transportation department was to make sure that the schools had enough time in between start times so that there was not any

congestion with buses, parents dropping off and students that walk to school. There needs to be a good 30 minutes between the schools start times to avoid congestion.

Sarah Campeau: Was there a survey done of the traffic? As a parent of St. John Fisher Senior, I have lived through the traffic for the last four years and it is an extremely dangerous area. Now that you are adding even more students to the area, even if the bussing system is organized, there will still be parents dropping off high school students, parents dropping off daycare students and buses arriving. I am concerned about the traffic in the area and I want to know if you know how bad it actually is?

Carol Heffernan's response: We do operate the buses at Lindsay Place right now and our equipment services team is working with Civil Engineers regarding the drop off at St. Thomas. However, there will be an hour between the end time of St. Thomas High School and the end time of St. John Fisher. Therefore, within that hour students on the school buses will have left as well as the students who take the STM and the students being picked up by parents.

David Meloche also responded: I have been on site many times, and I do recognize the congestion on Summerhill. Over the years, the variables have changed. 20 years ago when there were 1400 students at LPHS, there were 7 buses vs the 22 proposed now. Culture has changed, things are done differently now, there are a lot more parents dropping off now. In scenario A, there is more time in between to allow for that circulation. Scenario B does shorten that timeframe as far as the amount of traffic going in and out.

Sarah Campeau: Did you consult with the city for managing the traffic in the area and finding out ways to have that addressed?

Carol Heffernan's response: Our next step is to work with the City of Pointe-Claire. In two weeks there will be the first resolution sent to the Council of Commissioners regarding civil engineering work. We need the city to review all the civil engineering, paving etcetera that will be done between St. John Fisher, the church and Lindsay Place. We are anticipating a lot of work with the city who have been good partners with us in the past to help us and give us additional suggestions.

Christina Forest asked a follow up question: I understand that the parking lot that is adjacent to the church is the property of LBPSB. Are you suggesting that there are going to be some improvements to that area as part of the civil engineering plan that is being put forward?

Carol Heffernan's response: Nothing has been passed yet, but you are walking down a correct line.

Noel Burke commented: I understand the traffic concern. I was on the St. John Fisher Governing Board when they got the city to widen the street and create the loop on Summerhill for traffic. Parents should be comfortable to know that there will be designated drop off spots and clearly, there were many concerns that came through in the correspondence after the announcement concerning parents dropping off St. Thomas children

on Summerhill as opposed to Broadview. Again, decisions will not be made until March 22, 2021, but I believe it is a non-starter, there will need to be designated areas for drop off. We are very conscious of this issue and parents should be comfortable that it will be well organized. This issue will be worked out in a reasonable fashion so that there is no crossover in the buses and the parent drop offs for any of the three schools involved.

Christina Forest read a question from the chat: Has St. Thomas changed their hours in anyway to avoid the extra twenty minutes at lunch?

David Meloche's response: St. Thomas has not modified their time. As mentioned before, the timeframe that we are allowed is between 8:00am – 5:00pm. St. Thomas begins at 7:55am. This time needs to be voted upon on a yearly basis for the exemption from the collective agreement to start before 8:00am. If they were to start even early, some students would need to be on the buses earlier than 6:45am, which would be even harder on the high school students. Trying to fix one problem creates another.

Christina Forest read a question from the chat: In terms of that extra twenty minutes in scenario B could the extra lunchtime be spread to the recesses?

David Meloche's response: The challenging part is that because of the teachers collective agreement there are a certain number of minutes that staff cannot surpass for supervision. Because their supervision time was already increased due to the addition of the extra twenty minute recess last year by adding this time as well would not work. By putting the twenty minutes at lunch, it would create additional salary for staff that are working at lunch.

Christina Forest asked a question from the chat: How many students use the school bus at St. John Fisher? If that information is not available can you provide it to us in the future?

Carol Heffernan response: Yes, it can be provided in the future.

Christina Forest commented: There were many questions that came to us with concerns surrounding the Daycare. I think some of those have been addressed. I would like to prioritize the questions to the people who are present at this Zoom meeting.

SP2.3 **QUESTIONS FROM THE PUBLIC**

Marie-Hélène Mondor: I would like to represent my colleagues at St. John Fisher Senior School. We had a staff meeting about this after school today. On their behalf, I would like to say that the staff does not like any of the scenarios suggested. They find that both options do not address many of the concerns that were written in their letters. One concern that has not yet been addressed is the influx of high school students at their dismissal at 2:30pm and how that will affect the elementary school. With over 1000 students leaving it will create a disruption for the elementary school. Our gym teachers use the field adjacent to the school and the students could disrupt this activity.

David Meloche's response: Yes, one of the concerns that will have to be addressed is managing the dismissal and how we would have the high school teachers on supervision to make sure there is no disruption to the functioning of St. John Fisher Junior and Senior during their last hour of class time. As far as the sports teams are concerned, there would have to be a negotiation for the sharing of the fields. We do have access to the field located on John Fisher Avenue, which would create less disruption for the elementary school.

Tom Rhymes commented: With regards to the proximity of the high school to the elementary school, this will not be the only circumstance where this occurs. We have Lakeside Academy and Maple Grove that are in close proximity and in LaSalle we have LaSalle Community Comprehensive and Allion Elementary. These schools also have similar challenges and yet they are able to co-exist with few issues. I am not dismissing your concerns, but rather informing everyone that it is a situation that we have in other locations and it is manageable.

Mark Sankoff: Is St. Thomas using Summerhill for their school buses?

Tom Rhymes' response: No.

Mark Sankoff: So what is St. Thomas using Summerhill for that is going to cause such transportation chaos?

David Meloche's response: I think the concern is that parents will use Summerhill as a drop off area.

Mark Sankoff: I think it needs to be shut off to St. Thomas parents. They have Broadview, they have a parking lot on the west of Broadview, they have a circular drop off in front of the school and they have John Fisher Avenue as well.

David Meloche's response: I would agree with you and that is where we would be working with the city, both public security and SPVM to ensure that we could mitigate that situation.

Mark Sankoff's response: If this is the case then St. John Fisher times should not have to be adjusted.

Eric Paradis: My topic is something that has not been brought up at all and that is with regards to what is right for the students. It is prominently evident in clinical studies that have been done that elementary school students are more productive during the early morning hours, 7:30am – 10:30am being the prime time. Similarly, high school students are much more productive with a later start. Why is that not being considered? It seems to be more about logistics and not about what is right for the children, which should be the priority of LBPSB without question.

David Meloche's Response: Many of the studies that were done were not based on a one-hour change; they were based on a morning and afternoon format. We have some of our elementary schools that start at 9:00am and likewise high schools that start at 8:00am and

according to looking at school results from schools with both early starts and late starts there is no significant difference between the results between an early start elementary and a late start elementary and vice versa for high school because we are talking about an hour difference.

Eric Paradis's response: If you look at the studies that show K4, K5 and grades 1 and 2 their best learning time is between 7:30am – 10:30am you have lost more than half of that learning window at the Junior Campus. You are now giving the teachers an hour and fifteen minutes to optimize their productive time, which is not ideal. It is my understanding that St. Thomas teachers refused a late start. Was it ever considered that they would change their time to a late start?

Tom Rhymes' response: That is certainly not the case that St. Thomas teachers rejected a late start. The question, as Carol Heffernan showed in her slides, is when we do an analysis within the major school change process we need to do an assessment of the impact of those decisions including the impact of the closure of a late start school (Lindsay Place) and its impact on the transportation network. Carol Heffernan indicated the number of schools that would subsequently be impacted because of the start change of St. Thomas is significant so the fact of the matter is that the least impact was the shift in the times for St. John Fisher Junior and Senior. A change in time for St. Thomas would have had an impact on five to seven additional schools. In an ideal world where the system was not reliant on the transportation networks, then the other factors mentioned would be primary. However, our system is very interconnected by its transportation network. Does that take second place over consideration of optimal start times, sadly yes, that is where we stand for this circumstance.

Laura Sulano question: Is it possible to get the city buses to come more frequently to avoid crowds and kids lingering?

Carol Heffernan's response: Part of the Transportation Advisory Committee includes an STM person and someone off island. They say that they cannot guarantee that the bus will always be there. If they have extra buses they can always send one, but the next day if someone were sick then they would not have the bus available for that area.

Laura Sulano question: I know at my children's school they have specific city buses allocated for their school is that not possible for our high schools?

Carol Heffernan's response: We do have them in LaSalle and Verdun, but so far, they have not committed to giving us any on a reliable base on the West Island.

Laura Sulano commented: I am concerned about parking for the staff at St. Thomas now that they are inheriting a lot more staff than what Lindsay Place has presently. Speaking for my staff, they currently have trouble finding parking and I am concerned that their staff for lack of parking on their end will start coming to our side and that might create a shortage of parking spots for my staff in particular at lunch and maybe the entire staff.

Carol Heffernan's response: On March 22, 2021 there might be a resolution passed which will address some of these concerns. We have been working with the City of Pointe-Claire with regards to some of these issues. We hear what you are saying and part of our plan will be reiterating to the St. Thomas staff where they are allowed to park and where the parking spots are for St. John Fisher Junior and Senior.

Laura Sulano's response: Along the lines of parking, sometimes the staff at St. John Fisher Senior park behind the church and I know that land is part of LBPSB, but what is happening is that we get calls from members of the church complaining that we are parking there. Whom do we need to talk to so that there is an understanding that we need the parking?

Carol Heffernan commented: The school principals and the church will need to have a conversation about this situation.

Natasha Mentore commented: Deborah Shizgal and I will work on resolving the issue for this current year.

Christina Forest paused the meeting to thank Carol Heffernan for being present at the meeting and sharing all the information, which has been very helpful in making us understand the situations involved. Carole Heffernan left the meeting at 7:30pm.

SP2.4 MEETING EXTENSION

Christina Forest announced that 7:30pm was approaching and made a motion to extend the meeting until 8:00pm, seconded by Nadia Lawand and approved unanimously.

Resolution: 20-21-05

Noel Burke commented: I wanted to address the issue of the parking, drop off and those other pieces. It is clear that Council would expect and intends to have these zones clearly designated to all staff and parents. Once again, I want to reassure parents that this will be worked out. Those issues are part of things that will be worked out, not only start times, ends times, parking and transportation; it is all of those issues that have to be addressed. Council would expect the proposals brought forward would include all these pieces.

Desiree Morgan question: I would like more clarification as to why this decision was made. Initially, when I heard about it, I thought the issue was that there were not enough buses for the twinning of buses, now it sounds like it is a congestion issue?

Tom Rhymes' response: I will say it is a combination of both. The primary motivator is the twinning of buses, to be able to provide bus service to both schools, but in essence, it is a question of providing bus service to the network. The only way we can provide the service in its current state is to have buses twinned. Without twinning our routes, we would have half the service that we currently have in place. This is the impact it has when we pull one school (Lindsay Place High School) out of circulation. We had a similar situation a few years back when Riverdale High School moved into Pierrefonds Comprehensive High School. Riverdale

was a late start school, PCHS starts at 8:00am we had to adjust the transportation system, and we had to flip Kingsdale Elementary to a late start school. The analysis that we do is essential. As stated earlier, flipping St. Thomas to a late start school would tumble out in five to seven other schools. By maintaining an early start for St. Thomas means that only St. John Fisher Junior and Senior are affected. Secondary to that, is looking at those three schools and their close proximity to each other and understanding why they should not all have the same start time.

Desiree Morgan question: Have there been any surveys or ideas about how many parents will be able to send their children to daycare in the morning? With a later start time there will be an influx of parents who will need to use morning daycare.

Tom Rhymes' response: That is not something we have numbers for yet. It is possible that the principals have some idea of numbers already.

Nadine Émond comment (translated): Mme. Émond is a kindergarten teacher so I will speak on behalf of the children. Mr. Rhymes and Mr. Burke you both are my bosses and I am loyal to you, but tonight I talk for the students. You talk about the buses, traffic and cars, but for me, I work with children that are five years old. I work with Autistic children, dyslexic children, I work with all types of children with needs and these children deserve the best. It is clear that we need to start thinking outside the box. When we say, should we change busing, should we reduce the amount of children we are bringing from St. Anne de Bellevue to St. Thomas and instead have a community school like we do in the French system. I am saying we do in the French system because for my children we did not have a choice. The community school is where they go. If we decided to choose a different school then the parents would be responsible to drive them to school; there would not be a school bus for them. Therefore, for me I find it very insulting to say you have a choice of changing our lunch people and daycare people who do not necessarily have other activities to keep the children occupied at lunch. In addition, maybe the children should not be occupied at lunch because they also need a break from learning. However, we also all know that too much relaxation can create more discipline problems so now we have another issue and I do not understand. I know that this affects seven other schools and it is very complicated, but maybe when you decided to close LPHS and relocate St. Thomas that you should have thought this through. Maybe we are just two schools for you but for us this is our school, it is where we work, it is where we chose to live in a community with these people. Thank you for listening to me, at the end of the day I work with these children and it is not true, Mr. Meloche, that it is just an hour. It might be an hour in the morning, but to go to school until 3:45pm for some children they have nothing to give or receive at this hour. They spend the day in groups and for a child with autism or tired children who woke up to get to daycare for 7:00am and then go to 5:00pm, it doesn't make sense. You can go to your office and close the door, but these children do not have this so what is supposed to happen? We need more help, we need more support. We are the ones that need to work with this decision and we are here because we love the children and we want them to be able to learn in the best conditions possible. What are we to tell them? The buses are more important, this is not normal. Think outside the box, find another solution,

bring them more public transportation, stop bringing them from off the island. It does not make sense for the children.

Christina Forest commented: Thank you Nadine Émond for your passionate commentary. There is a lot of chat coming through and she is echoing the sentiment of many of our parents in the community. I would like to invite someone from the school board or Noel Burke to respond to her comments. Your response will not only be to Nadine Émond, but to dozens of parents in our community.

Noel Burke's response: I appreciate the passion and the rationale. The transportation of students across the large area has been a concern of Council for a while. There is an inherent evolution to the transportation system that has generated these issues. Not much short of a complete overhaul of the transportation system across the board would be needed to be able to address that issue. What that entails however are the same kinds of concerns for all the different schools in the system. I am not saying it is impossible, but highly improbable. I do take to heart Mme. Émond's comment about transporting children from off island to attend school on island. We are aware of those issues and there are no immediate ways to change the situation. I do think there is a need for a review and I agree in principle with what Mme. Émond is saying. We are trying to find the best way forward in the short term. We are here to listen to these concerns as we move forward.

Rachel Ethier commented (translated): Mme. Émond pretty much said what I was thinking. I would just like to add that we are only talking about one extra hour, but this would mean two hours of daycare for the children before they even start school. It is difficult for fifth graders; I cannot imagine what it is like for K5. The other thing I want to add is that I have been a teacher at St. John Fisher for twenty-two years and when we were a later start school, it was difficult teaching in the last hour of school. The children could not learn new material because they were too tired.

Naomi Proctor question: How many buses are there for the Junior and Senior schools?

Deborah Shizgal's response: Six full buses and one mini bus.

Naomi Proctor: I know for myself personally, and I suspect many other parents as well, will no longer be able to use the bus system because we will have to drop our children off at daycare in the morning therefore eliminating the need for some buses. For example if we were to reduce the number of buses that we need for the Junior and Senior schools would we be able to keep our earlier start time?

Tom Rhymes' response: Even if parents are not using the buses they still need to be twinned with a school. No matter what the number of buses are that are servicing a school if those buses are not being twinned it does not work. We need to look at the efficiency of the entire system and where we are spending our funds.

Keikanne Sithole question: With all the extra children who will be needing daycare services is their going to be enough room for all them?

David Meloche's response: We do use the classrooms for Daycare. Whatever the number of students we can accommodate during the school day we can also accommodate in the daycare.

Keikanne Sithole commented: We are all guaranteed a spot in daycare if we need it?

David Meloche's response: Yes

Angela question: I understand from the previous presentation that there has been an increase in the number of buses that will go to St. Thomas. I am wondering if there has been any consideration in a reduction in busing service to St. Thomas from far distances in order to accommodate the situation?

Tom Rhymes' response: I will speak generally to this topic as transportation is Carol Heffernan's dossier and she is far more on top of it than I am. The short answer is yes, however the process of reducing that needs to take place has to happen over a period of time.

Angela question: Are all of those twenty-two proposed buses required to provide the mandated busing for students based on board criteria? For example, if you live in a certain area you are entitled to transportation. Are all of those buses for the mandated minimum?

Tom Rhymes' response: As stated before, this is Carol Heffernan's area of expertise, but I will say that these buses would be coming from transportation zones. There may be some accommodation busing as well; for example the empty seat program. None of those buses however, are uniquely accommodation buses.

Sarah Campeau question: Could you look at accommodation busing more globally for this series of schools so that you can gain the money you need to add a mini bus to the system so that we could get our earlier start times. If parents are paying for the bus the school needs to add, can we get the times we want?

Tom Rhymes' response: Do you mean paid busing and no free busing?

Sarah Campeau: No, adding more seats that are accommodation busing for students that are outside of the zone. Students are coming from all over the place to attend schools in this area. If we ask parents who are having their children bused in from far away to pay for the privilege of being bused in and we have enough accommodation busing and enough pay from the parents that would get us another bus in the system so that we could still have an early start time.

Tom Rhymes' response: Again, when I spoke about the bus numbers before, there is no magic

number that would work because it is a question of recurring expense. I might not fully understand what you are asking.

Sarah Campeau commented: I will write the question down and send it with the other questions that we did not have a chance to answer this evening.

Christina Forest commented: I want to thank everyone for their questions. She spoke about the fact that there is concern around COVID and how that affects our community and what that means for traffic flow, daycare and space. Many parents have come to us expressing concern about the timing of the announcement and that it occurred after registration had already taken place. Parents have expressed to us that they have specifically chosen St. John Fisher because of the early start times. With regards to daycare, there will be many parents who will need to use daycare that have not had to use it in the past as a result there is concern about space with all the influx of children and the need to maintain bubbles.

Tom Rhymes' response: I understand the concern over COVID, however, it has been a situation that we have been managing for the last year and to date we have not had an outbreak in the daycares and we still have significant numbers using our daycare services.

David Meloche's response: I do acknowledge that the timing was out of sync with regards to the announcement and parent registering for the next school year. If there are families that can not go to St. John Fisher because of economic constraints we do make accommodations for families on a case-by-case basis. If there are families who have made the decision because it is an earlier start school then there is a transfer process to allow the students to change schools.

Christina Forest commented: We have had many questions come through the chat that we are not able to get to this evening. I feel that we have addressed many of the questions in our Zoom chat. One final question that I would like to ask is what information would you like back from us on March 19, 2021?

Noel Burke's response: Council of Commissioners is scheduled to make a decision on March 22, 2021 with regards to the start times and the two different scenarios that were presented tonight. I wanted to address one of the comments in the chat about not keeping an 8:00am start time and Council wanted that to occur and for all the reasons explained this evening it is not foreseeable this year. It is not that we disregarded an 8:00am start, we did look at this, but it was not seen as possible.

We are making a decision on March 22, 2021 and we are asking for the Governing Boards to respond to the two scenarios that are on the table as to which their preference is between A & B, so that Council can make a decision that is more representative of the two schools.

Christina Forest commented: I want to thank the Governing Board members, teachers and parents who collaborated on organizing the feedback for this meeting. I will speak for myself in saying that it has been a difficult period because it does not feel like we had enough time to properly digest the information as you can see our community is incredibly engaged. We

definitely want to have a seat at the table to come up with a solution and to work together for what is best for our children. Nine days to pick one over the other is a bit of a challenge. If I may say, we encourage you to learn from this experience in the future and provide as much upfront knowledge, details and transparency to the community and schools that you work with so that your engaged parents can do what they do best, which is to remind you of what is important.

Noel Burke's comment: We are asking for a choice between the two scenarios A or B by March 19, 2021. If you cannot make a choice then share that with Council as well. Your response can be A or B or something else (even blank) so that you as Governing Board Chairs can continue to be responsive to your community. Whatever the outcome of your discussion I would ask you to share with Council by March 19, 2021.

Christina Forest commented: This is a perfect opportunity to let everyone present tonight know that the schools website has a page for both the Junior and Senior Governing Boards and on these pages are the Chairs e-mail addresses. You also have access to Deborah Shizgal and Natasha Mentore's email addresses on the website. We have captured all the questions presented on the chat tonight and we will work on getting answers for those questions.

Nadia Lawand Closing Remarks: We have had many questions in the chat tonight and I would like to ask, if we were to put these questions in a document and send them to you, can you answer them before we make our decision?

Noel Burke and Tom Rhymes' response: Yes

Nadia Lawand Closing Remarks: Thank you to Christina Forest for taking care of the question period tonight. Thank you to everyone for taking your time for our community. If you see that we are having another meeting please attend, it is important that we hear everyone's point of view.

Deborah Shizgal commented: Thank you everyone for attending tonight's meeting.

David Meloche commented: If the questions can be collated and come from the Governing Board that way everyone can benefit from the responses we provide and then you can send the responses out to the community.

Natasha Mentore comment: Thank you to the parents and the staff and to the senior administration and to Noel Burke who were able to attend and to Judith Kelly our Commissioner. We really appreciate all of you being here and answering many of the questions. I know parents continue to email Deborah Shizgal and I and we will be answering you, however if we feel those questions would benefit the community we will add them to the list that we send to the administration.

ADJOURNMENT

Motioned at 8:13 pm by Christina Forest to adjourn the meeting, seconded by Sarah Campeau.

Resolution: 20-21-06

Respectfully submitted

Tiffani Wheeler

Attendees From The Public

Okasna Yakimiw

Jason Duke

Robyn Riley

Stephanie Kobzan

Tim Miller

Angela – John Abbot

Rebecca Cherry

Lauren Houghton

Keikanne Sithole

Sébastien Gagnon Dorval

Martin O’Connell

Matteo Landry

Jessica Pereira

Andrea Glover

Shannon Hogan

Janice Kelly

Desiree Morgan

Nicole Forsyth

Lori Maugeri

Nadia Jasmin

Katherine Mahomed

R. Zimmerman

John DeVincentis

Scott Kelly

Raffaella Marchese

Martine Dubois

Kristen Stanly

Julia Scrase

Janice Bowen

Nathalie Bojanowski

Jessica W

Sanjay Imajery

Allison Saunders

Eric Schultz

Eric Paradis

Lynn D-H

Ella

Adrian

Aldo

Teasdale

Frankie

EF

Paris

Aaron

Melina

Hanane

Gail

Fiona

Stephanie

Carole

Lillian

Appendix 1



SJF Junior/Senior

Planning for 2021-2022



Joint Governing Board meeting
March 10, 2021



Transition with STT

Lindsay Place 2020-2021

Students: 400

Buses: 6 + 3 minivans

Drop Off/Pick up: Front semi-circle
Low volume

STM: every 30 minutes

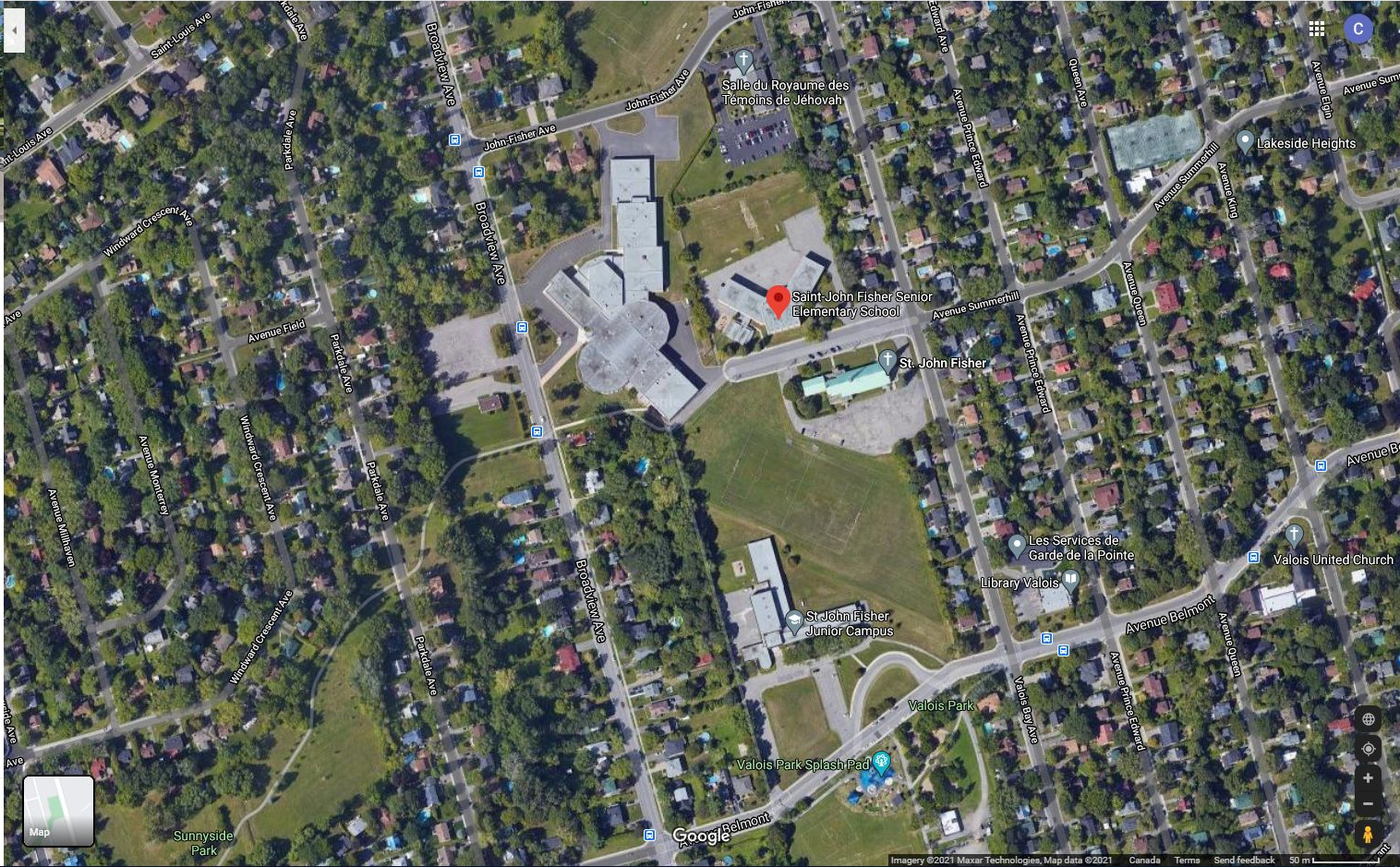
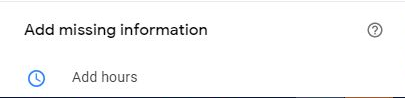
St-Thomas 2021-2022

Students: 1350

Buses: 22 (projected)

Drop Off/Pick up: Currently under review
Increase volume

STM: every 30 minutes





St-John Fisher Junior & Senior

Six twinned buses:

- ★ LPHS (3)
- ★ Dorval (1)
- ★ JRHS (1)
- ★ Horizon HS (1)

ST-Thomas: Currently 18 twinned bussing

- ☆ BHS (7)
- ☆ Dorset (3)
- ☆ MAC (3)
- ☆ JRHS (2)
- ☆ Dorval (1)
- ☆ St-Charles (1)
- ☆ Christmas Park (1)

Lindsay Place - Currently 9 twinned busses

- ☆ St John Fishers
- ☆ Clearpoint
- ☆ Beechwood
- ☆ Westpark

School hours Scenarios A



SJF Junior Campus

7:00	Daycare opens
9:15	School start
	120 minutes in class
11:15	Recess (20 minutes)
	60 minutes in class
12:35	Lunch (50 minutes)
	60 minutes in class
2:25	Recess (20 minutes)
	60 minutes in class
3:45	School ends and Daycare opens
6:00	Daycare services close

SJF Senior Campus

7:00	Daycare opens
9:05	School start
	120 minutes in class
11:05	Recess (20 Minutes)
	60 minutes in class
12:25	Lunch (50 minutes)
	60 minutes in class
2:15	Recess (20 minutes)
	60 minutes in class
3:35	School ends and Daycare opens
6:00	Daycare services close

School hours

Scenario B



SJF Junior Campus

7:00	Daycare Opens
8:50	School start
	120 minutes of class
10:50	Recess (20 minutes)
	60 minutes of class
12:10	Lunch (70 minutes)
	60 minutes of class
2:20	Recess (20 minutes)
	60 minutes of class
3:40	School ends and Daycare opens
6:00	Daycare services close

SJF Senior Campus

7:00	Daycare Opens
8:40	School start
	120 minutes of class
10:40	Recess (20 minutes)
	60 minutes of class
12:00	Lunch (70 Minutes)
	60 minutes of class
2:10	Recess (20 minutes)
	60 minutes of class
3:30	School ends and Daycare opens
6:00	Daycare services close

Questions

